

An architectural rendering of a modern building with a curved facade. The building features a series of horizontal, ribbed balconies or overhangs in a light tan color, contrasting with the dark grey or black structural elements. Large glass windows are visible on the lower levels, reflecting the sky and surrounding environment. Two people are walking on a paved plaza in front of the building. The sky is a clear, pale blue.

CONCORDE

ELEVATED MEETINGS & EVENTS

AT NATIONAL LANDING

CONTENTS

01	WELCOME _____	PAGE 003
	KEY FEATURES	004
	FLOOR PLAN	005
02	MEETINGS & EVENTS _____	PAGE 006
	FACILITY GUIDE	007
	JOHNSON FORUM	009
	McCAMPBELL STUDIO	012
	ARCHER CONFERENCE ROOM	015
	COCHRAN HUDDLE ROOM	016
	GLENN BOARD ROOM	017
	DIGITAL SIGNAGE SOLUTIONS	018
03	CATERING _____	PAGE 019
04	NEIGHBORHOOD _____	PAGE 020
	MAP	021
	BOOKING INQUIRIES _____	PAGE 025

01 WELCOME

Where
meetings
and events
take flight

Explore Concorde, the Washington region's premier meeting and events destination arriving in National Landing in early 2026.

Located at 2011 Crystal Drive at the base of the future CC2DCA pedestrian bridge, Concorde sets a new standard in corporate hospitality, combining exceptional service, culinary excellence, and state-of-the-art facilities in a prime location next to the Pentagon, Amazon's new National Landing headquarters and Ronald Reagan Washington National Airport.

KEY FEATURES

Combining local history with aviation-inspired design, Concorde will create a new level of connectivity and sophistication that redefines how and where people gather in the capital region.

Anchored by the Johnson Forum—a spacious presentation hall accommodating up to 300 seated guests—and complemented by five additional rooms supporting big and small programs, Concorde offers a total event capacity that surpasses 470. Additionally, key spaces feature modern signage solutions for showcasing your brand and providing guests with event information.

Concorde will also offer an on-site culinary program curated by renowned restaurateur David Morton, founder of Episcopo Hospitality. Morton will oversee Concorde's elevated dining experience, bringing his signature touch to every detail.



On-site event management support for conferences, workshops, networking events, and product launches.



McC Campbell Studio features in-ceiling speaker and mic system that allow for equality of voice during conversations.



All rooms feature plug-and-play video conferencing solutions with built-in multi-view cameras and high-quality audio for a seamless hybrid experience.



Integrated room control panels in the Johnson Forum and McC Campbell Studio that allow users and event staff to control audio, volume, meeting management, lights, and room shades from a single location.



Digital signage solutions at elevator lobby, Johnson Forum and Glenn Board Room.



All rooms are equipped with wireless microphones.



A large Pre-Function Room for breaks, meals, and networking between sessions.



The Johnson Forum features an adjoining Green Room for VIP preparation and discreet entry.



High-speed Wi-Fi and wired internet connections available.



Direct entry to the Concorde Lobby from Crystal Drive or private entry from the North Entrance.



Private and discrete dining available in the Glenn Board Room.

PEDESTRIAN BRIDGE TO REAGAN AIRPORT

VRE

METRO



ON-SITE
MARKET AND CAFÉ

ON-SITE
WINE BAR AND LISTENING ROOM

MAIN LOBBY

BATHROOMS

BATHROOMS

CONCORDE
LOBBY

MAIN ENTRY

CONCORDE FACILITIES

VIP
ENTRY

NORTH
ENTRY

CRYSTAL DRIVE

FLOOR PLAN

A Johnson Forum

B Archer Conference Room

C Cochran Huddle Room

D McCampbell Studio

E Glenn Board Room

F Green Room

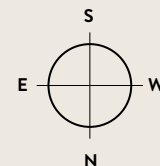
G Pre-Function Room

H Private Call Rooms

--- DIVISIBLE
ROOM

● DIGITAL
SIGNAGE
LOCATIONS

— CONCORDE
FACILITIES



02 MEETINGS & EVENTS

Versatile
spaces for
any gathering,
big or small

Step into a world where every meeting and event becomes an unforgettable experience. At Concorde, we've reimagined what business gatherings can be. Our cutting-edge facilities and inspiring atmosphere set the stage for innovation, collaboration, and success.

FACILITY GUIDE

ROOM	DIMENSIONS	SQUARE FEET	CEILING HEIGHT	THEATER	CLASSROOM	ROUNDS	U-SHAPE	HOLLOW SQUARE	CONFERENCE
JOHNSON FORUM (EAST + WEST)	76'-6" x 31'-4"	2,409 SF	11'-1"	300	88	88	78	60	48
JOHNSON FORUM EAST	35'-3" x 31'-4"	1,260 SF	11'-1"	188	40	48	36	20	20
JOHNSON FORUM WEST	40'-4" x 31'-4"	1,101 SF	11'-1"	188	40	40	36	20	16
McCAMPBELL STUDIO (EAST + WEST)	66'-4" x 26'	1,730 SF	11'	144	52	80	50	48	44
McCAMPBELL STUDIO EAST	31'-4" x 26'	817 SF	11'	85	18	32	22	24	-
McCAMPBELL STUDIO WEST	34'-2" x 26'-1"	891 SF	11'	76	22	40	22	24	12
ARCHER CONFERENCE ROOM	19'-6" x 11'-1"	230 SF	11'	-	-	-	-	-	8
COCHRAN HUDDLE ROOM	11' x 9'-1"	127 SF	11'	-	-	-	-	-	4
GLENN BOARD ROOM	24'-6" x 20'-1"	506 SF	11'	-	-	-	-	-	14

JOHNSON FORUM



CONCORDE RECEPTION & LOBBY



PRE-FUNCTION ROOM



McCAMPBELL STUDIO



ARCHER CONFERENCE ROOM



GLENN BOARD ROOM



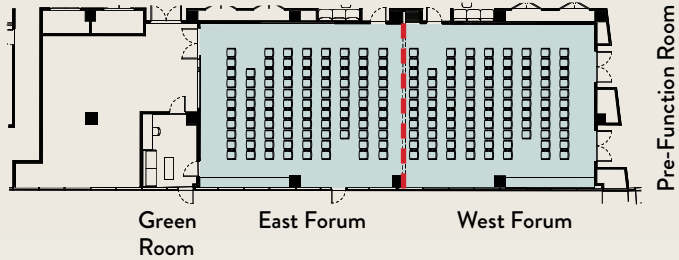
CONCORDE

JOHNSON FORUM

THEATER LAYOUT



CLASSROOM LAYOUT



JOHNSON FORUM

**MAXIMUM
OCCUPANCY**
300

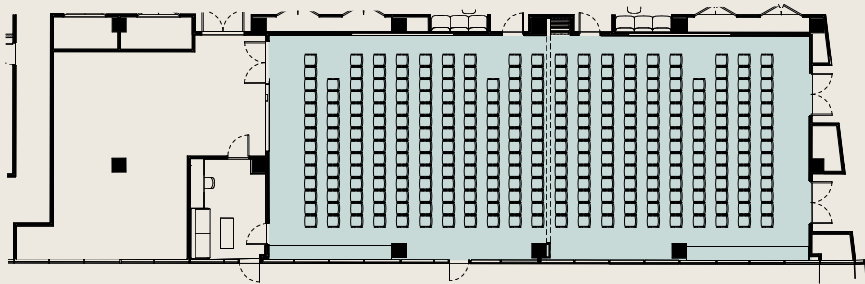
AUDIO VISUAL CAPABILITIES

- (2) 110" Displays
- (4) 98" Displays
- Built-In Multi-View Cameras
- Wireless Microphones
- Plug-and-Play Video Conference
- Integrated Room Control Panels for Audio, Volume, Lights and More
- Digital Signage Solutions
- High-Speed Wi-Fi
- Wired Internet

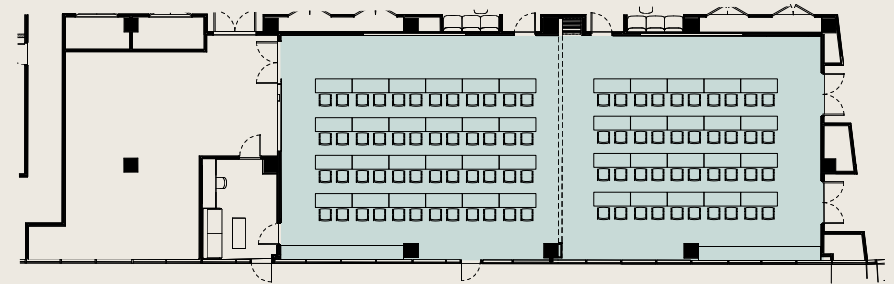
FEATURED AMENITIES

- Pre-Function Room
- VIP Entry Through Discreet Green Room

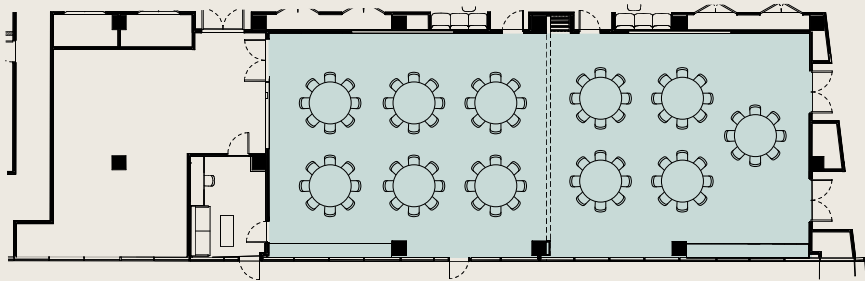
COMBINED ROOM LAYOUT OPTIONS



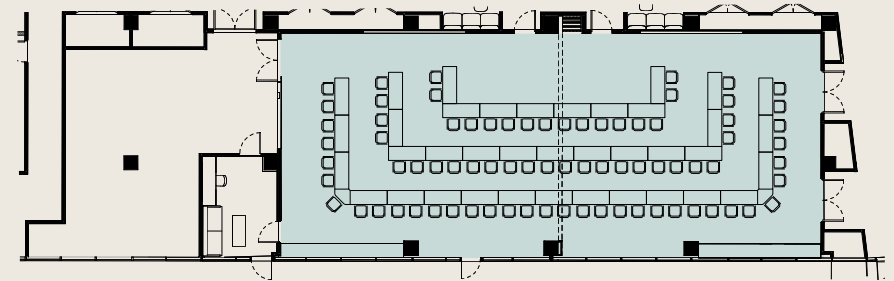
THEATER
300 Seats



CLASSROOM
88 Seats, 44 Tables



ROUNDS (6')
88 Seats, 11 Tables



U-SHAPE
78 Seats, 38 Tables
2 Connector Tables



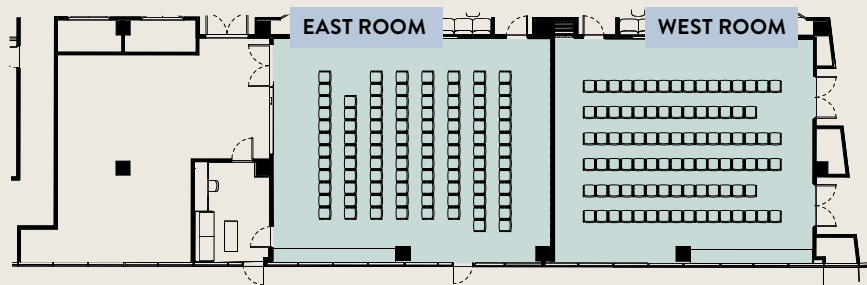
JOHNSON FORUM

**MAXIMUM
OCCUPANCY**
188 (Each Room)

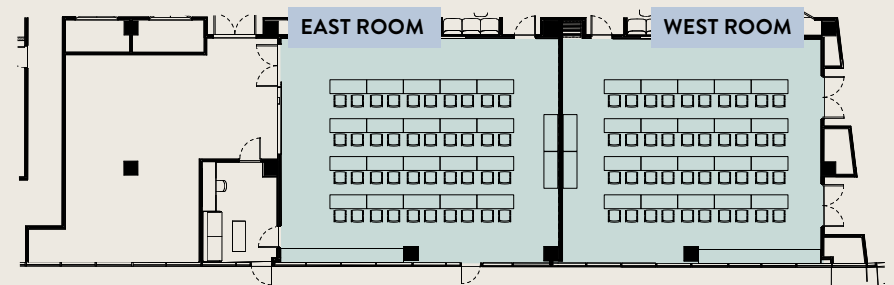
- AUDIO VISUAL CAPABILITIES**
- (2) 110" Displays (East)
 - (2) 98" Displays (East)
 - (2) 98" Displays (West)
 - Built-In Multi-View Cameras
 - Wireless Microphones
 - Plug-and-Play Video Conference
 - Integrated Room Control Panels for Audio, Volume, Lights and More
 - Digital Signage Solutions
 - High-Speed Wi-Fi
 - Wired Internet

- FEATURED AMENITIES**
- Pre-Function Room
 - VIP Entry Through Discreet Green Room (East)

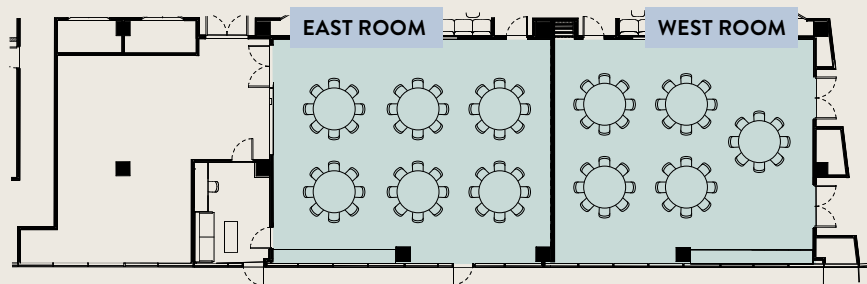
SEPARATE ROOM LAYOUT OPTIONS



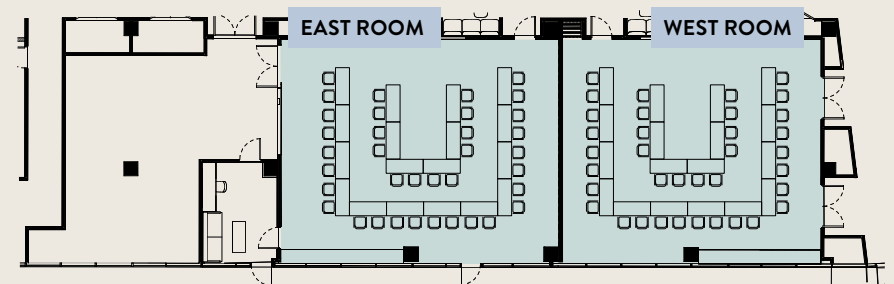
THEATER - 2 ROOMS
188 Seats (Each Room)



CLASSROOM - 2 ROOMS
40 Seats, 22 Tables (Each Room)



ROUNDS (6') - 2 ROOMS
48 Seats, 6 Tables (East Room)
40 Seats, 5 Tables (West Room)

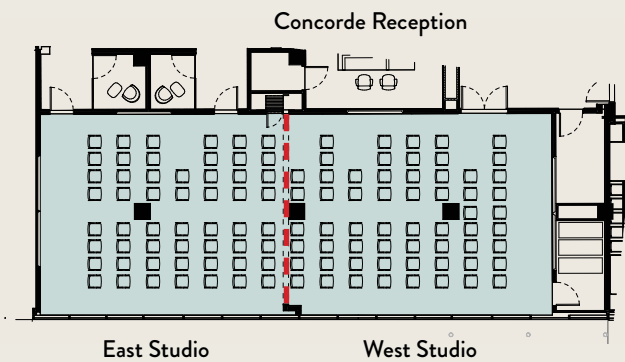


U-SHAPE - 2 ROOMS
36 Seats, 18 Tables (Each Room)



CONCORDE

McCAMPBELL STUDIO



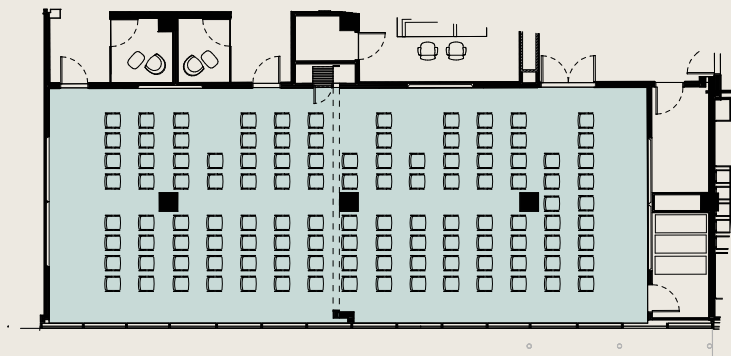
McCAMPBELL STUDIO

**MAXIMUM
OCCUPANCY**
144

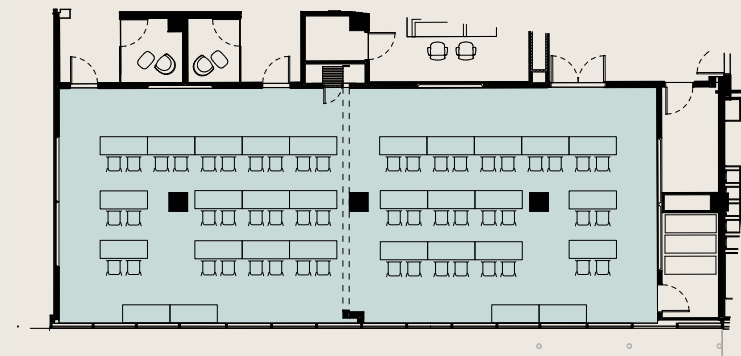
AUDIO VISUAL CAPABILITIES

- (6) 98" Displays
- In-Ceiling Speakers and Microphones
- Built-In Multi-View Cameras
- Wireless Microphones
- Plug-and-Play Video Conference
- Integrated Room Control Panels for Audio, Volume, Lights and More
- High-Speed Wi-Fi
- Wired Internet

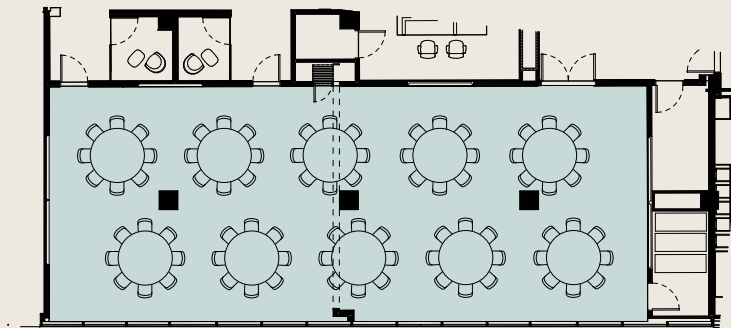
COMBINED ROOM LAYOUT OPTIONS



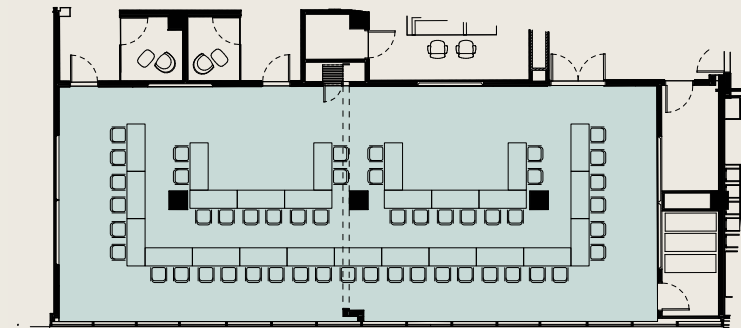
THEATER
144 Seats



CLASSROOM
52 Seats, 30 Tables



ROUNDS (6')
80 Seats, 10 Tables



U-SHAPE
50 Seats, 25 Tables



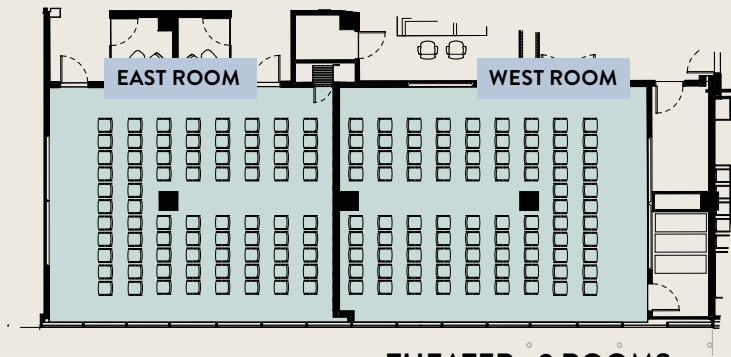
McCAMPBELL STUDIO

**MAXIMUM
OCCUPANCY**
76 (East Room)
85 (West Room)

AUDIO VISUAL CAPABILITIES

- (3) 98" Displays (East)
- (3) 98" Displays (West)
- In-Ceiling Speakers and Microphones
- Built-In Multi-View Cameras
- Wireless Microphones
- Plug-and-Play Video Conference
- Integrated Room Control Panels for Audio, Volume, Lights and More
- High-Speed Wi-Fi
- Wired Internet

SEPARATE ROOM LAYOUT OPTIONS



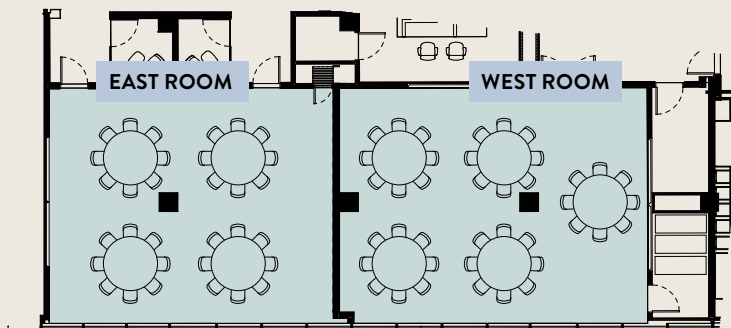
THEATER - 2 ROOMS

76 Seats (East Room)
85 Seats (West Room)



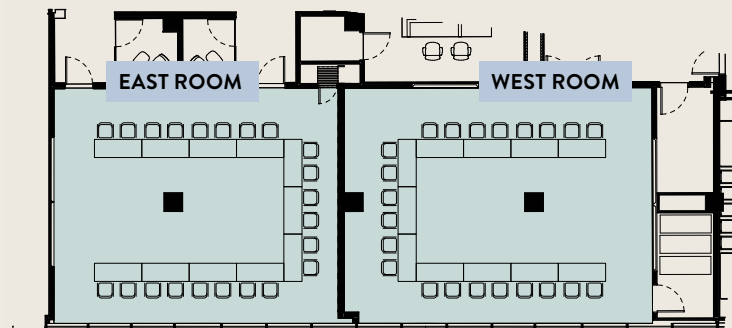
CLASSROOM - 2 ROOMS

18 Seats, 11 Tables (East Room)
22 Seats, 13 Tables (West Room)



ROUNDS (6') - 2 ROOMS

32 Seats, 4 Tables (East Room)
40 Seats, 5 Tables (West Room)

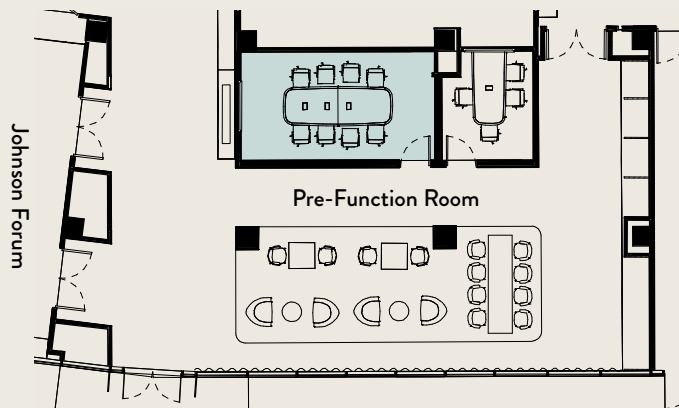


U-SHAPE - 2 ROOMS

22 Seats, 11 Tables (Each Room)



ARCHER CONFERENCE ROOM



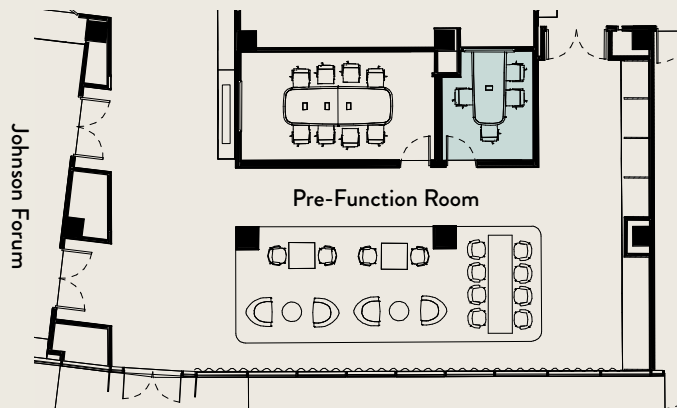
MAXIMUM OCCUPANCY

8

AUDIO VISUAL CAPABILITIES

- (1) 65" Display
- Wireless Microphones
- High-Speed Wi-Fi
- Plug-and-Play Video Conferencing
- Built-In Multi-View Cameras
- Wired Internet

COCHRAN HUDDLE ROOM



MAXIMUM OCCUPANCY

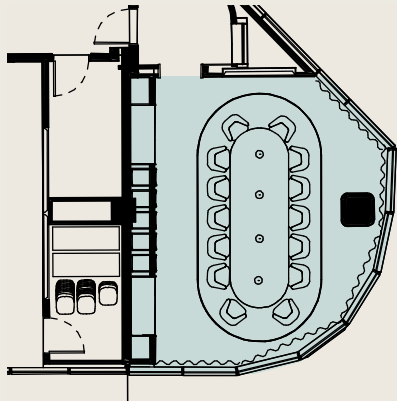
4

AUDIO VISUAL CAPABILITIES

- (1) 65" Display
- Wireless Microphones
- High-Speed Wi-Fi
- Plug-and-Play Video Conferencing
- Built-In Multi-View Cameras
- Wired Internet

GLENN BOARD ROOM

Concorde Lobby



**MAXIMUM
OCCUPANCY**
14

AUDIO VISUAL CAPABILITIES

- (1) 75" Display
- Wireless Microphones
- High-Speed Wi-Fi
- Plug-and-Play Video Conferencing
- Digital Signage Solutions
- Built-In Multi-View Cameras
- Wired Internet

DIGITAL SIGNAGE SOLUTIONS

Enhanced brand visibility with opportunities to customize spaces in key areas like the Johnson Forum, Glenn Board Room, and the elevator lobby. Each location offers digital solutions designed to effectively showcase your brand and make a lasting impression.

ELEVATOR LOBBY**JOHNSON FORUM****GLENN BOARD ROOM**

03 CATERING

Meaningful
connections
happen around
exceptional food

Concorde brings effortless dining to the workplace, offering elevated catering that enhances productivity and fosters connection, whether it's a curated office lunch, a team celebration, or a full-scale event. Thoughtfully crafted with high-quality ingredients and seamless service, Concorde ensures that every gathering feels intentional and stress-free.

04 NEIGHBORHOOD

Where
innovators and
defense come
to meet

National Landing is the premier mixed-use urban neighborhood where policy, defense, and technology converge. As a nexus of innovation, connectivity, and national interest, this business-friendly location provides unparalleled access to global leaders in defense technology, talent, and infrastructure essential for growth and success—making it the perfect place to host your next meeting or event.

CONCORDE

NEIGHBORHOOD
MAP





SURREAL

Surreal comes from the visionary team behind Seven Reasons and Imperfecto, featuring acclaimed Michelin-starred chef Enrique Limardo. This unique dining oasis serves fresh, original, and comforting fare in a glass-enclosed house—including tea and coffee by day that transforms into an enchanted speak-easy with delicious food by night.

1 MINUTE WALK



WATER PARK

In addition to over an acre of lush greenspace, this outdoor food hall includes 11 globally inspired menus, a performance stage and art installation spaces. It is also easy to reach and accessible for all. A trailhead building at the adjacent Mt.Vernon Trail is equipped with bike facilities, and an entrance to the future National Landing Station servicing Virginia Railway Express and Amtrak will feature a handicap-accessible connection.

4 MINUTE WALK



AND MORE

Ready to see what makes National Landing special? **Click here** to explore the neighborhood where innovators and national interest come to live and work.



CONCORDE

CONTACT US

BOOKING INQUIRIES

CONTACT

Email: concorde.events@jll.com

Phone: 571-596-2275



CONCORDE

CONCORDE.EVENTS

Visit our
website and
follow us on
social media
for more

 CONCORDEEVENTS.NL
